

LIVE KAILUA



KA MALANAI
IN KAILUA



LIVE KAILUA

Inspired by the breezes that flow through Kailua, Ka Malanai offers residents an appealing urban lifestyle and the conveniences of casual daily living. Just minutes from the beach, recreational activities, shopping and dining, this condominium community comfortably accommodates individuals and families seeking a prime location in the heart of Kailua Town.



IT'S ALL ABOUT HOME

D.R. Horton - Schuler Division – one of Hawaii's largest, oldest and most respected homebuilders – can help you find the home of your dreams.

Renowned for its meticulous attention to every stage of the building process, D.R. Horton carefully focuses on the intricate details - from planning to design, from materials to craftsmanship, and from excellence in sales to after-sale service. The result is a high-quality, high-value home that's built to last.



Whether you're a first time buyer or an experienced homeowner, D.R. Horton makes it easy to find and purchase your dream home. By enlisting the most trusted and experienced contractors in the state, D.R. Horton ensures that your home is built to the highest standards. Everywhere you look, you'll see the high quality that is the hallmark of D.R. Horton.

D·R·HORTON®
America's Builder
SCHULER DIVISION

www.DRHortonHawaii.com



Unit B2



FEATURES

Architecture for the Modern Lifestyle

- Architectural style that embraces the urban island lifestyle
- Termite-resistant James Hardie siding and simulated stucco exterior*
- Durable and stylish Masonite entry doors with Kwikset hardware
- Lush, landscaped courtyards
- Lanais built for entertaining*

Inspired Living Spaces

- High, 8'-10" ceilings at living, dining and bedrooms*
- Master suites feature double vanities, separate bathtubs and showers, walk-in closets
- Premium wall-to-wall carpet
- Ceramic tile surrounds at showers and baths
- Decorative and energy-efficient Halo and Maxim light fixtures, including recessed lighting
- Window blinds for optimal privacy
- High-efficiency central air conditioning at each residence

Kitchens that Cook

- Open plans perfect for entertaining
- Contemporary GE appliances to add a touch of luxury to your gourmet lifestyle
 - Dishwasher
 - Range with range hood*
 - Refrigerator
 - Convection / Microwave oven
 - Washer / Dryer
 - Disposal

- Premium wood cabinets with quality pulls
- Elegant solid surface countertops
- Moen faucets and Kohler stainless steel sink
- Powerful Badger 5 garbage disposal
- Elegant recessed lights and pendant lighting*

Efficient Energy for a Greener Environment

- R-13 insulation in perimeter walls with R-19 insulation at the roof
- Extensive use of energy-efficient LED and CFLs light fixtures in the homes and common areas
- Dual-glazed Low "E" windows and sliding glass doors
- Moen plumbing fixtures for premium efficiency
- Numerous large windows to allow natural light and air flow through the home
- Energy-saving Otis "ReGen Drive" elevators
- Walk, bike or skate to dining, shopping and recreation

Internal Works: Made Tight

- Access Control and intercom systems at elevators and common area stairs for security
- Fire sprinkler, fire alarm and smoke detectors for safety
- Preventative wood and ground termite treatment
- 10-year limited builder warranty

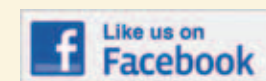
Standard Choices

- Flooring Colors
- Kitchen and Bath Cabinet Colors
- Kitchen and Bath Countertop Colors

Upgrade Choices

- Appliance Package
- Flooring
- Kitchen and Bath Cabinets
- Kitchen and Bath Countertops
- Closet Storage Systems
- Window Coverings

*Per Plan Type. Not all homes have this feature. Check with your Sales Agent.



www.facebook.com/DRHorton.Hawaii

Photos are representational only. Because we are continually improving our homes, we reserve the right to make changes and modifications to methods and materials of construction and to the floorplans, features, square footage and room dimensions without notice. Floorplans, features, square footage and room dimensions are intended to be as accurate as possible. However, due to actual construction, floorplans, features, square footage and room dimensions may differ. These floorplans and renderings are a fair representation of the models to assist the customer in visualizing the homes and may not be accurately depicted. Upgrades and options are available at an additional cost and are subject to construction cut-off dates. Check with your sales agent. REV. 12/13.





Site plans and other advertising materials are included to assist the reader in visualizing the development. The developer reserves the right to modify the site plan, specifications and features without prior notice or obligations approximate and may be changed. Buyers are encouraged to review the location of the parking stalls for their selected unit with the sales office.



. The site plan may not always depict lot lines, streets, etc. and is only meant to give the buyer a general view of the site plan. Some models may be reversed on certain lots. The locations of parking stalls on this site plan are



ALL ABOUT KA MALANAI

Centrally located in the heart of Kailua Town, Ka Malanai consists of six attractive four-story condominium buildings. Residents of Ka Malanai may select from more than eight floor plans, featuring one-, two- and three bedrooms, ranging from 719 to 1,811 square feet. Parking is on the ground floor, with three floors of living above. Access-controlled elevators to all residential levels in every building and air-conditioning in each home will provide comfort for residents and their pets.

Approximately 10 areas designated for BBQs across three shared courtyards will be available to residents, perfect for gathering with family and friends. As many residents find their way to the nearby beaches, they will also find convenience in the shared storage for water sports equipment such as surfboards and kayaks. Residents looking to maintain their fitness regimens will not have to go very far, as a circuit training course and permanent exercise equipment are offered in the courtyards.

A variety of Native Hawaiian plants will be grown as part of the lush landscaping in and around the shared courtyards.

Site plans and other advertising materials are included to assist the reader in visualizing the development. The developer reserves the right to modify the site plan, specifications and features without prior notice or obligations. The site plan may not always depict lot lines, streets, etc. and is only meant to give the buyer a general view of the site plan. Some models may be reversed on certain lots. The locations of parking stalls on this site plan are approximate and may be changed. Buyers are encouraged to review the location of the parking stalls for their selected unit with the sales office.

**KANEOHE MARINE
CORP BASE**

KA MALANAI

LIBRARY

**POLICE
STATION**

FIRE STATION

**LANIKAI &
MID PACIFIC
GOLF COURSE**

**KAILUA
BEACH**

**WHOLE FOODS
MARKET**

KALAHEO AVE.

**KAILUA
ELEMENTARY
SCHOOL**

**KAILUA
INTERMEDIATE
SCHOOL**

ONEAWA ST.

KUULEI RD.

**STRAUB
CLINIC**

**TIMES
SUPERMARKET**

KAILUA RD.

WANAAO RD.

**LONG'S
DRUGSTORE**

MACY'S

STARBUCKS

POST OFFICE

TARGET

**DOWN TO
EARTH**

**FIRST
HAWAIIAN
BANK**

HANANI ST.

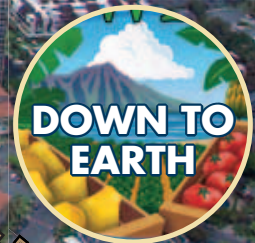
SAFEWAY



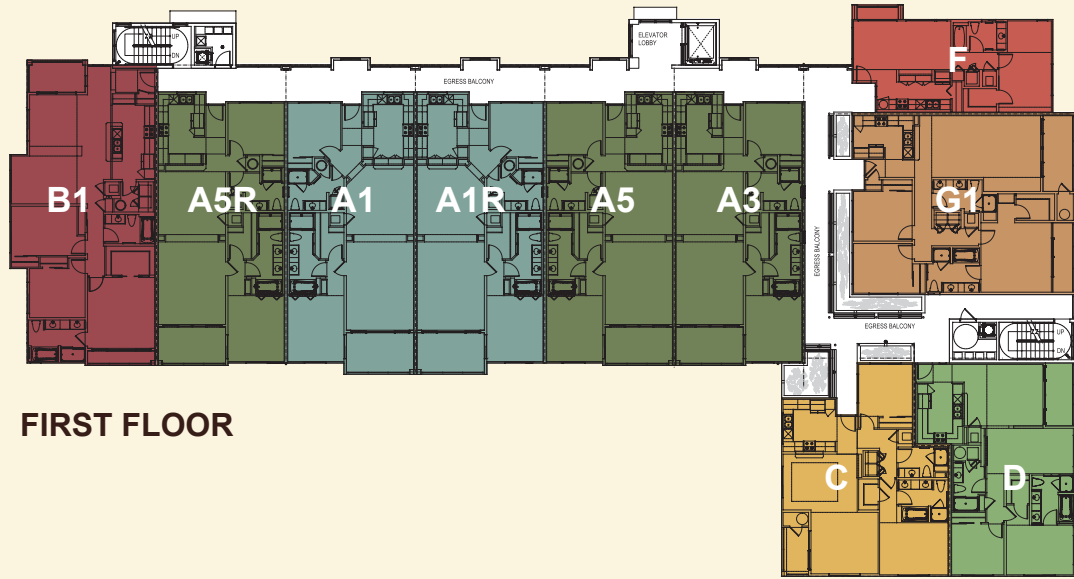
AOLOA ST.

HAMAKUA DR.

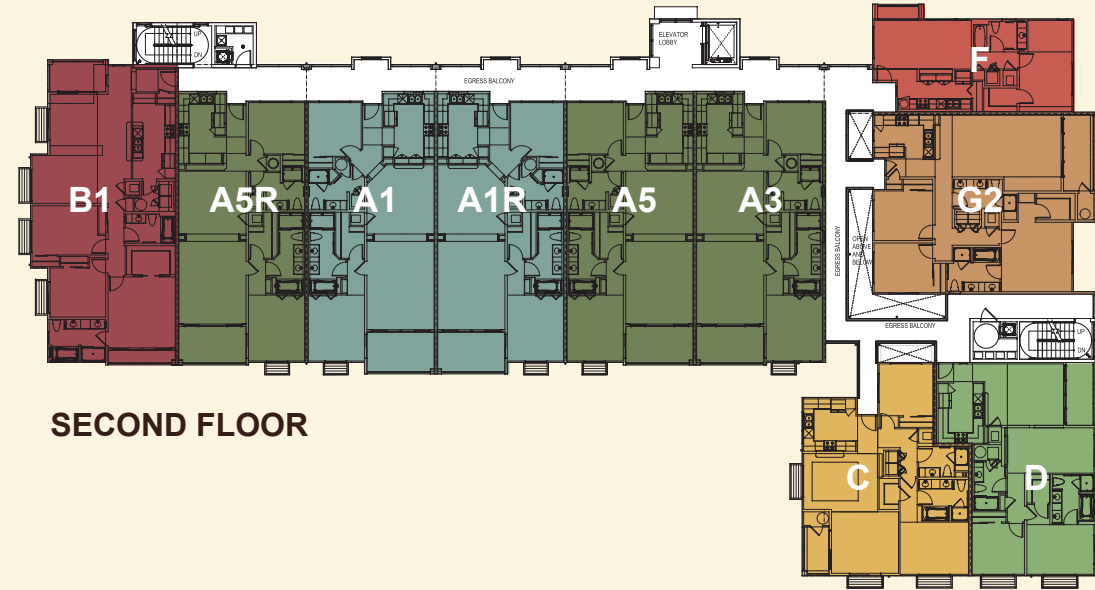
KAILUA RD.



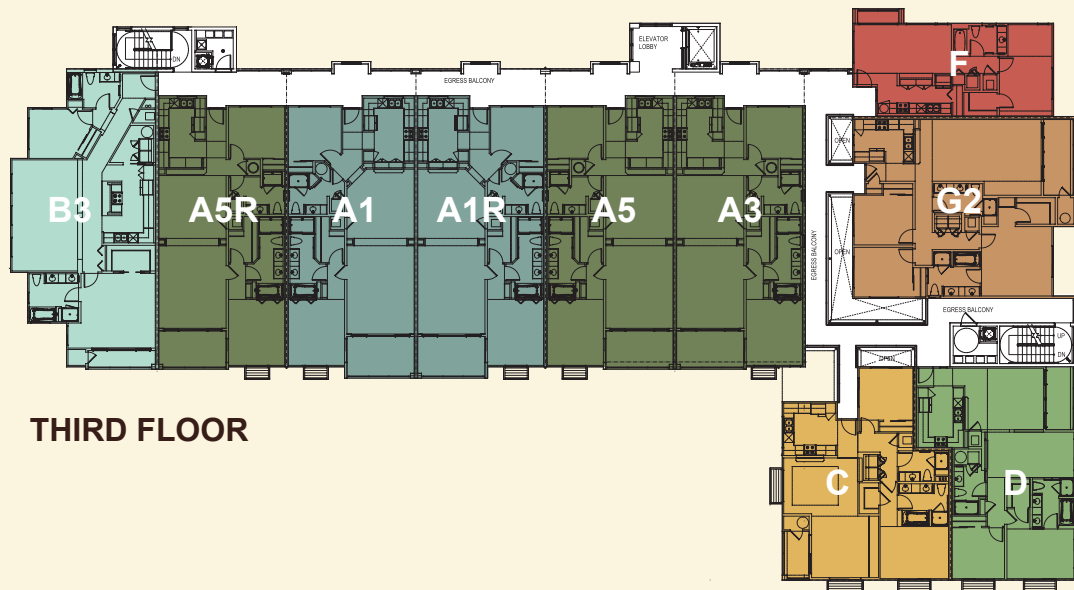
BUILDING TYPE I



FIRST FLOOR



SECOND FLOOR

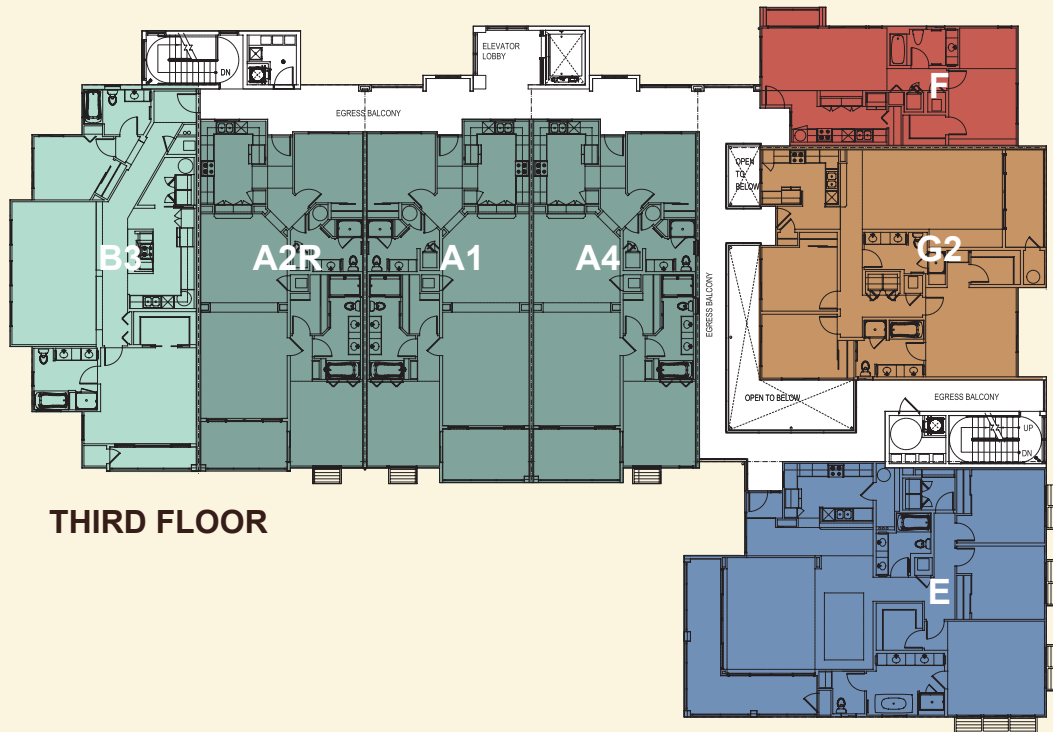
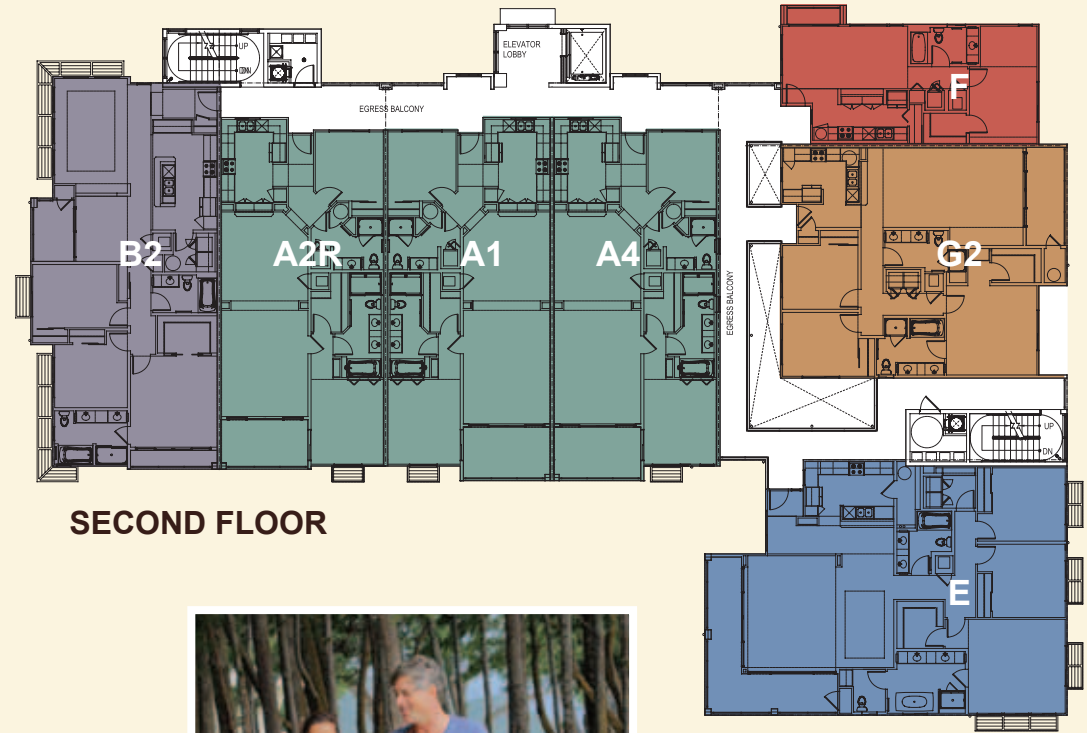
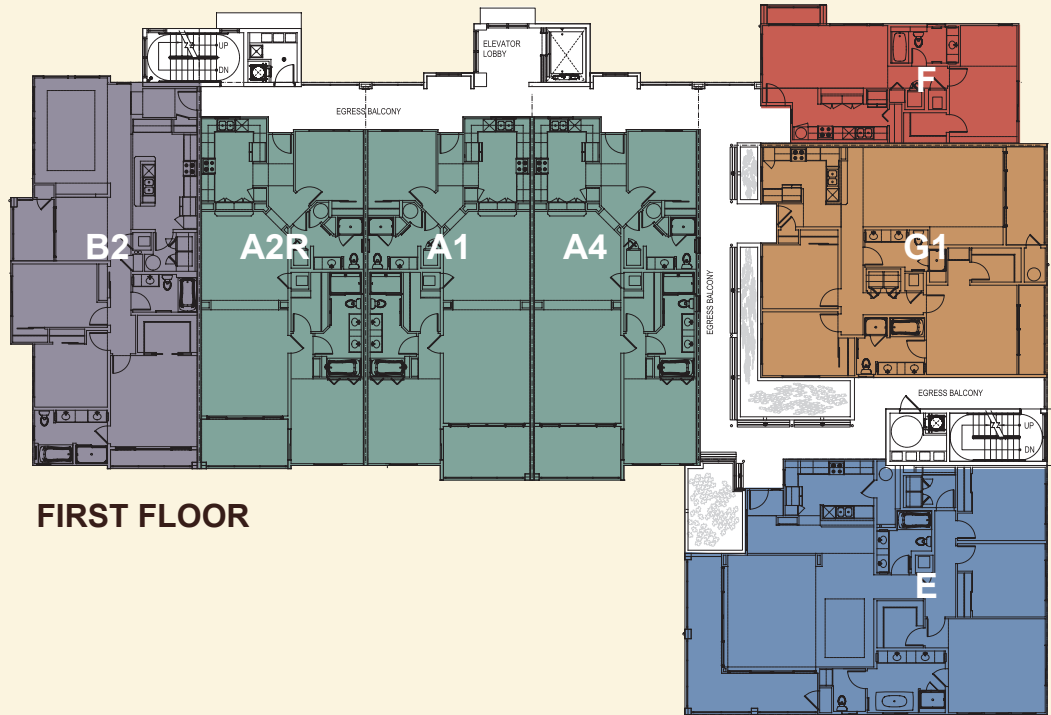


THIRD FLOOR



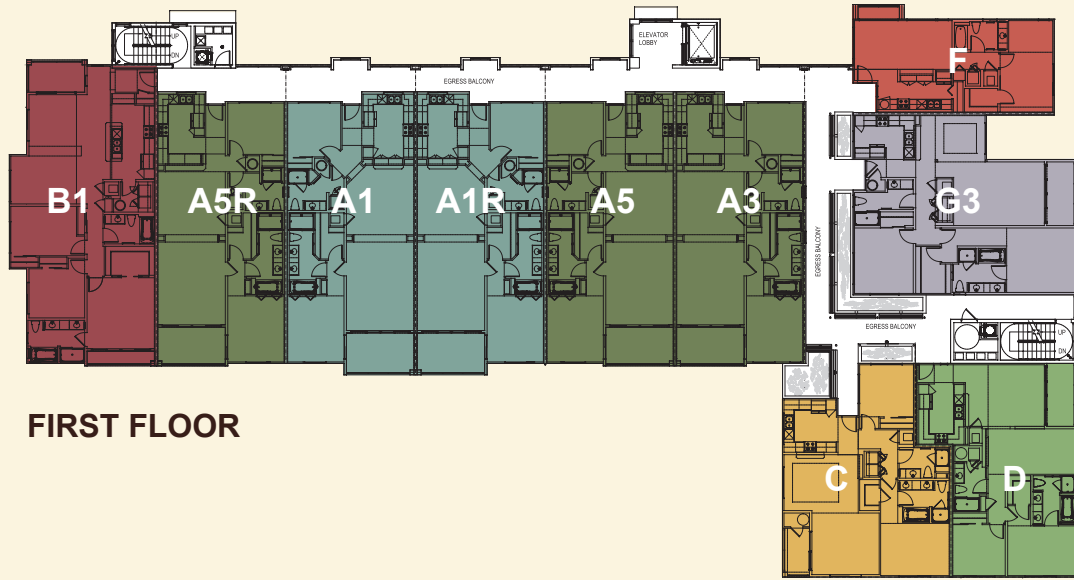
Photos are representational only. Because we are continually improving our homes, we reserve the right to make changes and modifications to methods and materials of construction and to the floorplans, features, square footage and room dimensions without notice. Floorplans, features, square footage and room dimensions are intended to be as accurate as possible. However, due to actual construction, floorplans, features, square footage and room dimensions may differ. These floorplans and renderings are a fair representation of the models to assist the customer in visualizing the homes and may not be accurately depicted. Upgrades and options are available at an additional cost and are subject to construction cut-off dates. Check with your sales agent.

BUILDING TYPE II

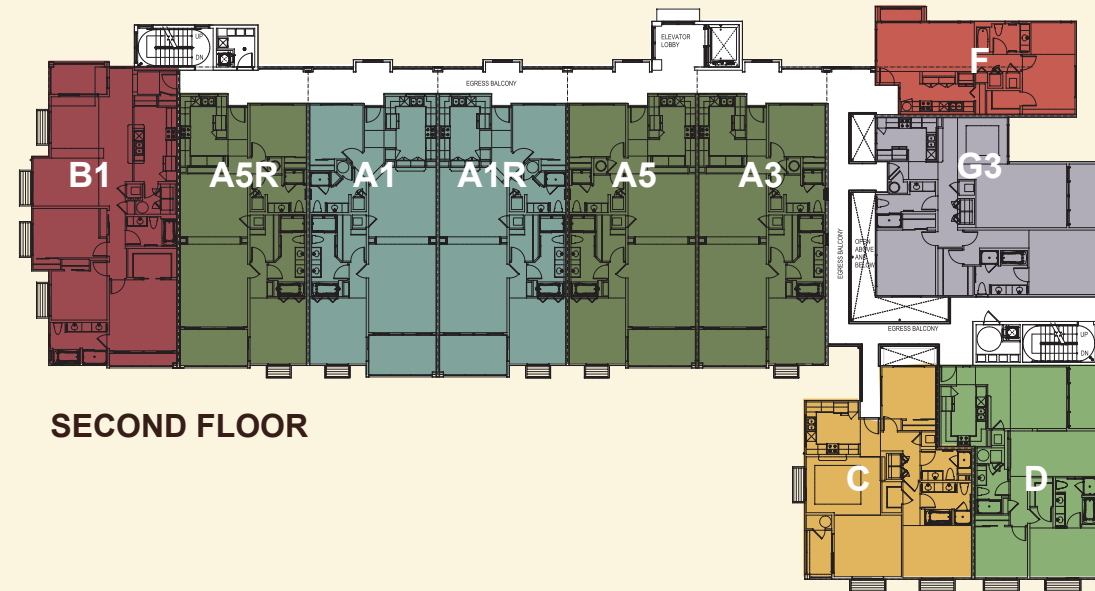


Photos are representational only. Because we are continually improving our homes, we reserve the right to make changes and modifications to methods and materials of construction and to the floorplans, features, square footage and room dimensions without notice. Floorplans, features, square footage and room dimensions are intended to be as accurate as possible. However, due to actual construction, floorplans, features, square footage and room dimensions may differ. These floorplans and renderings are a fair representation of the models to assist the customer in visualizing the homes and may not be accurately depicted. Upgrades and options are available at an additional cost and are subject to construction cut-off dates. Check with your sales agent.

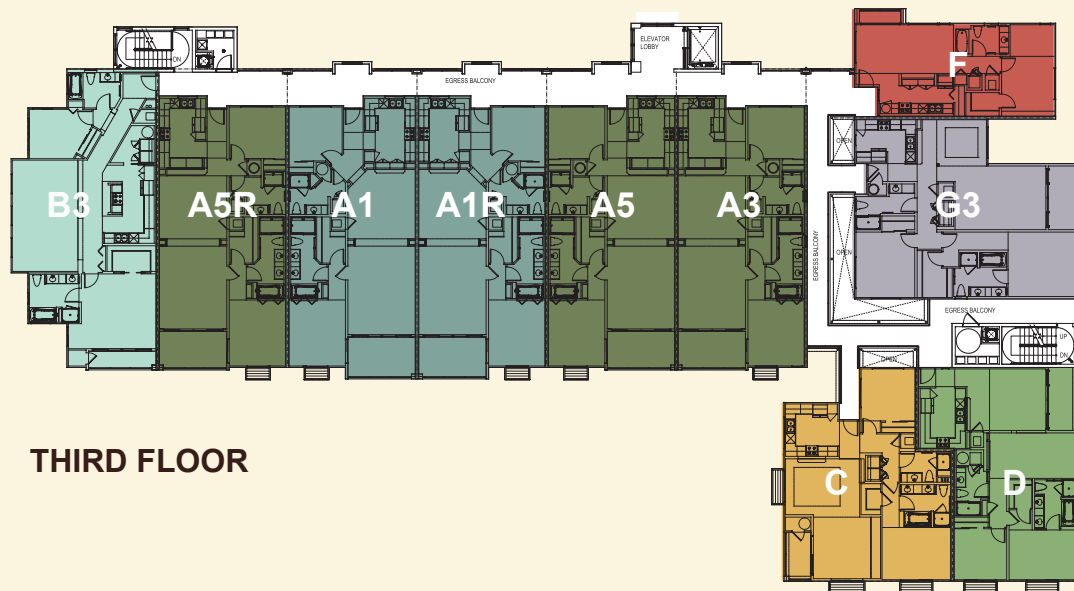
BUILDING TYPE III



FIRST FLOOR



SECOND FLOOR



THIRD FLOOR



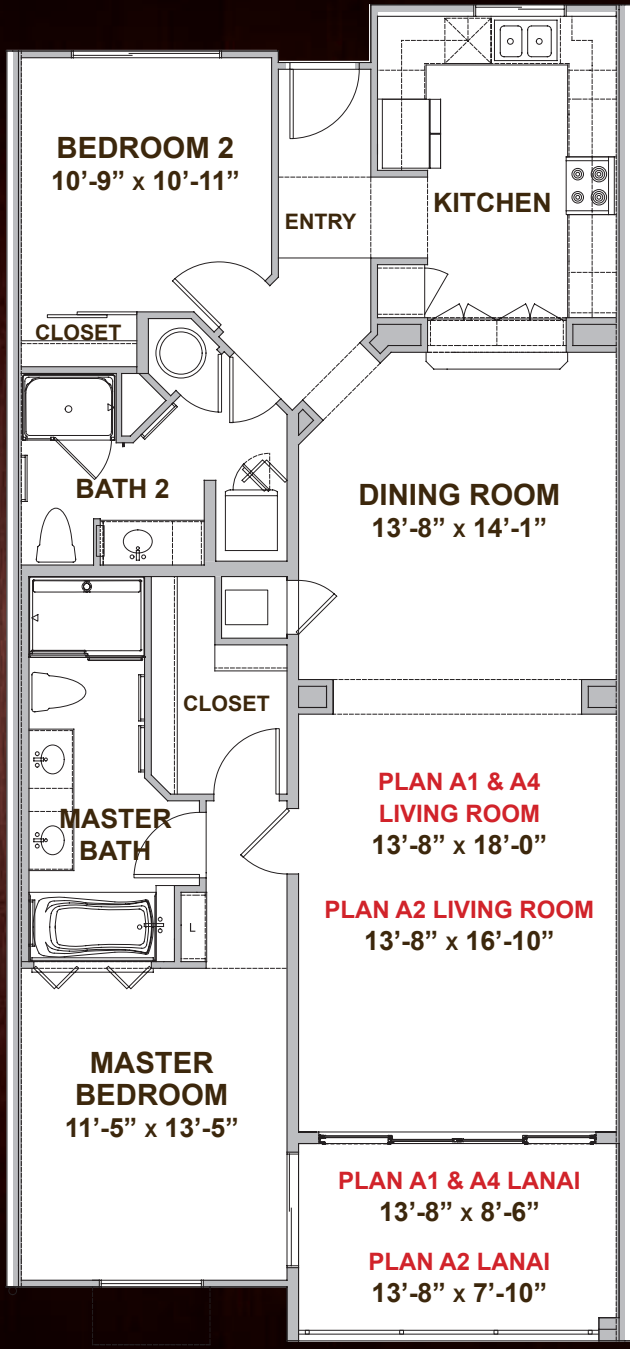
Unit E

Photos are representational only. Because we are continually improving our homes, we reserve the right to make changes and modifications to methods and materials of construction and to the floorplans, features, square footage and room dimensions without notice. Floorplans, features, square footage and room dimensions are intended to be as accurate as possible. However, due to actual construction, floorplans, features, square footage and room dimensions may differ. These floorplans and renderings are a fair representation of the models to assist the customer in visualizing the homes and may not be accurately depicted. Upgrades and options are available at an additional cost and are subject to construction cut-off dates. Check with your sales agent.

Aoloa
PLAN A1
 2 BEDROOM / 2 BATH
 Total Living Area 1,285 s.f.
 Lanai 116 s.f.
 Total Area 1,401 s.f.

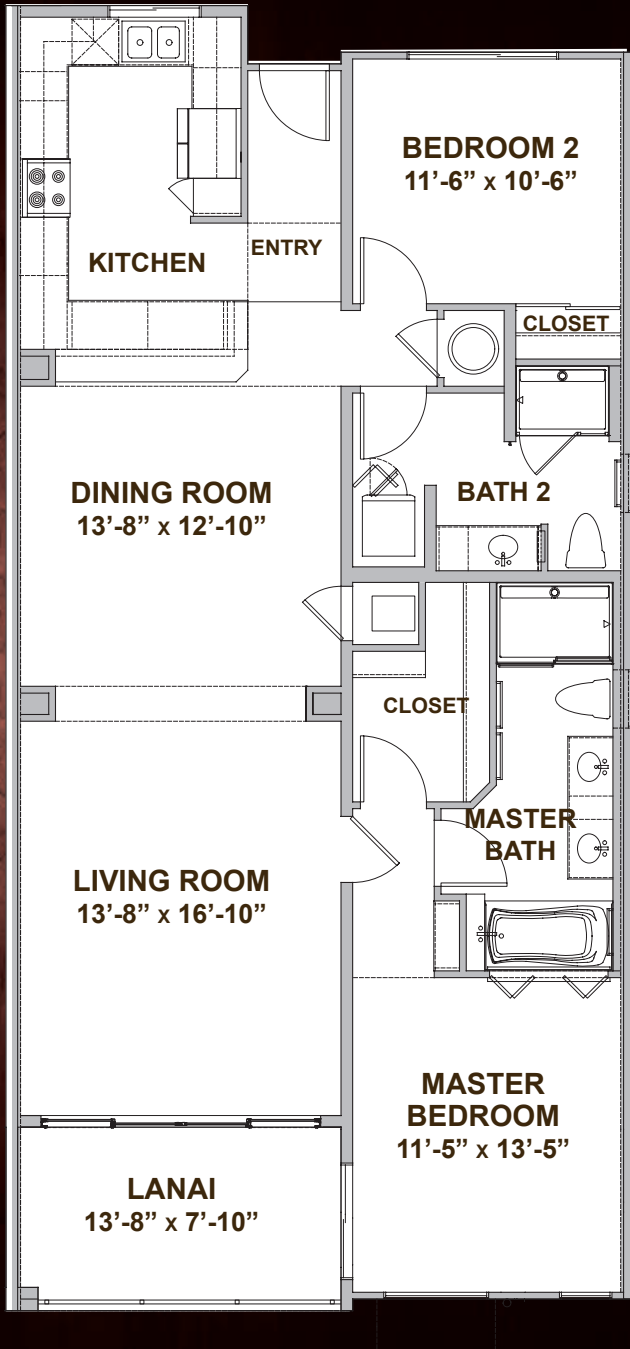
Hahani
PLAN A2
 2 BEDROOM / 2 BATH
 Total Living Area 1,270 s.f.
 Lanai 107 s.f.
 Total Area 1,377 s.f.

Wana'ao
PLAN A4
 2 BEDROOM / 2 BATH
 Total Living Area 1,287 s.f.
 Lanai 116 s.f.
 Total Area 1,403 s.f.



Oneawa
PLAN A3
 2 BEDROOM / 2 BATH
 Total Living Area 1,266 s.f.
 Lanai 107 s.f.
 Total Area 1,373 s.f.

Kalaeo
PLAN A5
 2 BEDROOM / 2 BATH
 Total Living Area 1,266 s.f.
 Lanai 107 s.f.
 Total Area 1,373 s.f.



PLAN A1 LOCATED IN:
 Building Type I, II, III:
 First Floor, Second Floor and Third Floor

PLAN A2 LOCATED IN:
 Building Type II: First Floor,
 Second Floor and Third Floor

PLAN A4 LOCATED IN:
 Building Type II: First Floor,
 Second Floor and Third Floor

PLAN A3 LOCATED IN:
 Building Type I:
 First Floor, Second Floor
 and Third Floor

Building Type III:
 First Floor, Second Floor
 and Third Floor

PLAN A5 LOCATED IN:
 Building Type I:
 First Floor, Second Floor
 and Third Floor

Building Type III:
 First Floor, Second Floor
 and Third Floor

Photos are representational only. Because we are continually improving our homes, we reserve the right to make changes and modifications to methods and materials of construction and to the floorplans, features, square footage and room dimensions without notice. Floorplans, features, square footage and room dimensions are intended to be as accurate as possible. However, due to actual construction, floorplans, features, square footage and room dimensions may differ. These floorplans and renderings are a fair representation of the models to assist the customer in visualizing the homes and may not be accurately depicted. Upgrades and options are available at an additional cost and are subject to construction cut-off dates. Check with your sales agent.

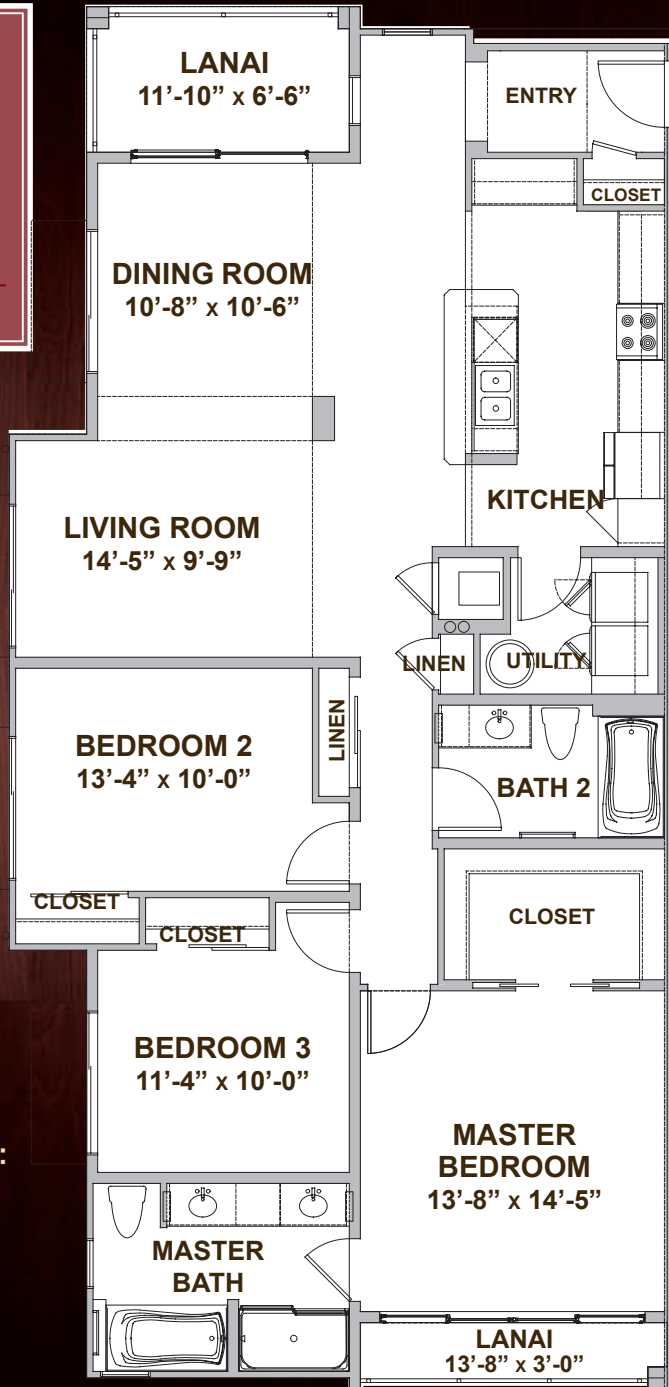
Keolu
PLAN B1

3 BEDROOM / 2 BATH

Total Living Area..... 1,515 s.f.

Lanai..... 116 s.f.

Total Area1,631 s.f.



PLAN B1 LOCATED IN:

Building Type I:
 First Floor and Second Floor

Building Type III:
 First Floor and Second Floor

Hekili
PLAN B2

3 BEDROOM / 2 BATH

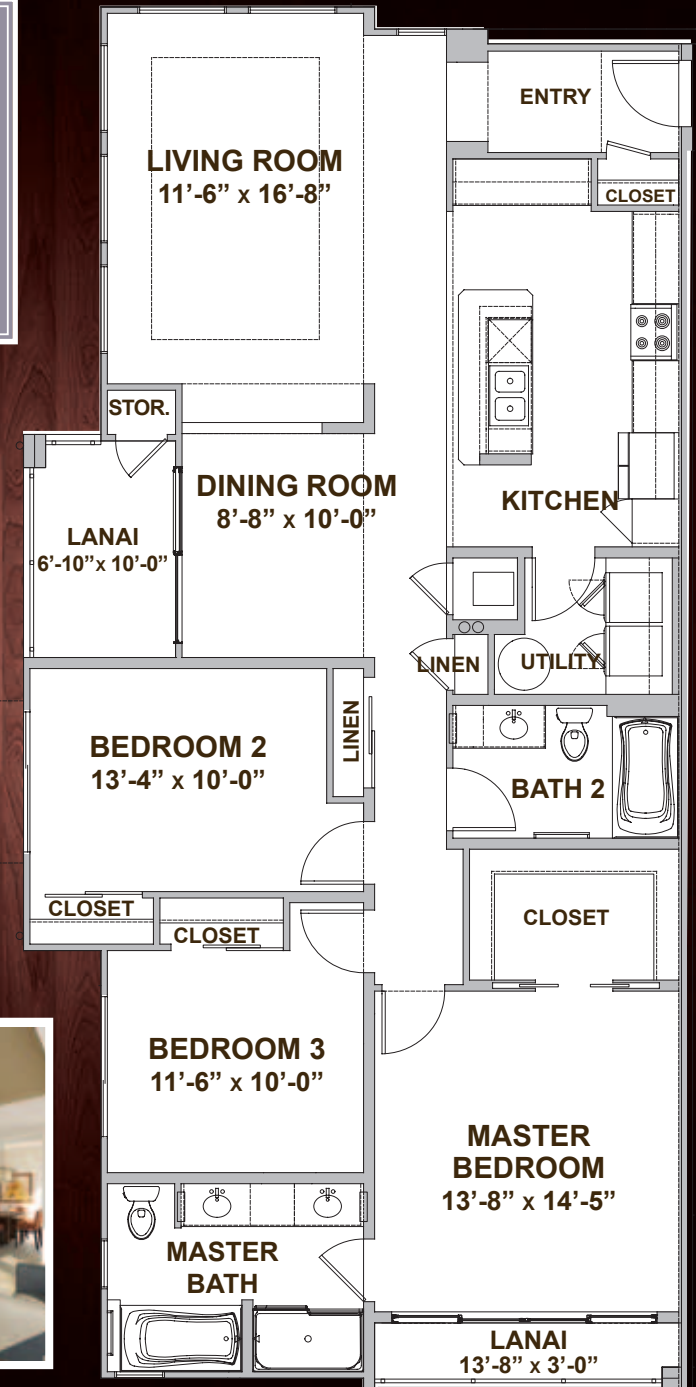
Total Living Area..... 1,529 s.f.

Lanai..... 106 s.f.

Total Area1,635 s.f.

PLAN B2 LOCATED IN:

Building Type II:
 First Floor and Second Floor



Photos are representational only. Because we are continually improving our homes, we reserve the right to make changes and modifications to methods and materials of construction and to the floorplans, features, square footage and room dimensions without notice. Floorplans, features, square footage and room dimensions are intended to be as accurate as possible. However, due to actual construction, floorplans, features, square footage and room dimensions may differ. These floorplans and renderings are a fair representation of the models to assist the customer in visualizing the homes and may not be accurately depicted. Upgrades and options are available at an additional cost and are subject to construction cut-off dates. Check with your sales agent.

Kaulei
PLAN B3

2 BEDROOM / 2 BATH

Total Living Area 1,440 s.f.

Lanai 51 s.f.

Total Area 1,491 s.f.



PLAN B3 LOCATED IN:

Building Type I: Third Floor

Building Type II: Third Floor

Building Type III: Third Floor

Photos are representational only. Because we are continually improving our homes, we reserve the right to make changes and modifications to methods and materials of construction and to the floorplans, features, square footage and room dimensions without notice. Floorplans, features, square footage and room dimensions are intended to be as accurate as possible. However, due to actual construction, floorplans, features, square footage and room dimensions may differ. These floorplans and renderings are a fair representation of the models to assist the customer in visualizing the homes and may not be accurately depicted. Upgrades and options are available at an additional cost and are subject to construction cut-off dates. Check with your sales agent.

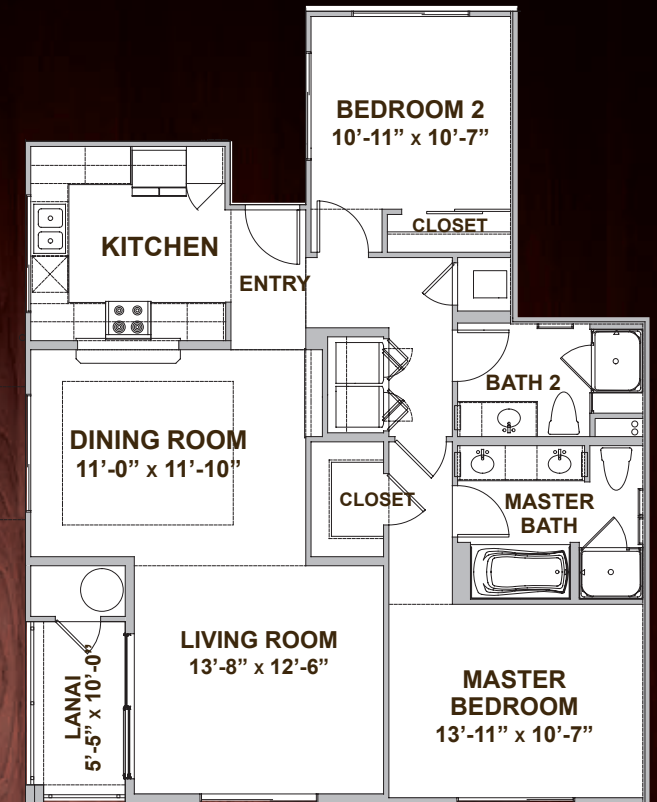
Kainalu
PLAN C

2 BEDROOM / 2 BATH

Total Living Area 1,138 s.f.

Lanai 53 s.f.

Total Area 1,191 s.f.



PLAN C LOCATED IN:

Building Type I:
 First Floor, Second Floor
 and Third Floor

Building Type III:
 First Floor, Second Floor
 and Third Floor

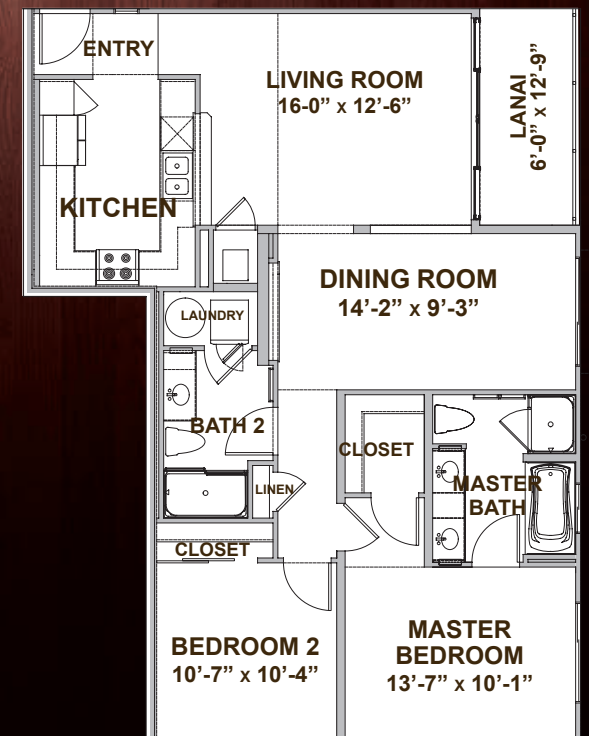
Awakea
PLAN D

2 BEDROOM / 2 BATH

Total Living Area 1,106 s.f.

Lanai 76 s.f.

Total Area 1,182 s.f.



PLAN D LOCATED IN:

Building Type I:
 First Floor, Second Floor and Third Floor

Building Type III:
 First Floor, Second Floor and Third Floor

Kailua

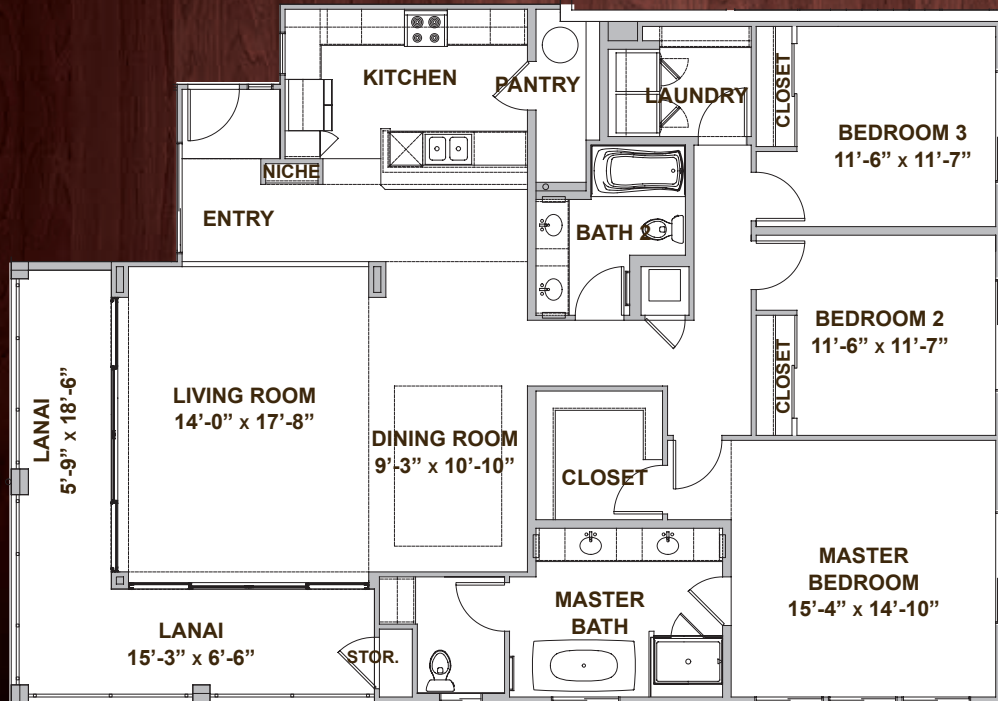
PLAN E

3 BEDROOM / 2 BATH

Total Living Area..... 1,811 s.f.

Lanai..... 241 s.f.

Total Area2,052 s.f.



PLAN E LOCATED IN:

Building Type II: First Floor, Second Floor and Third Floor

Akoakoa

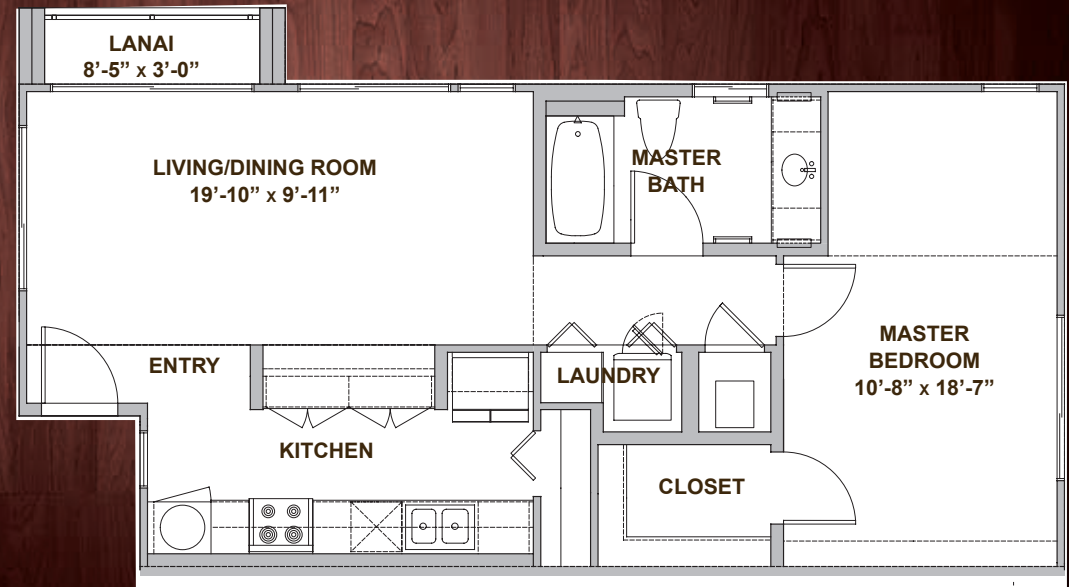
PLAN F

1 BEDROOM / 1 BATH

Total Living Area..... 719 s.f.

Lanai..... 25 s.f.

Total Area744 s.f.



PLAN F LOCATED IN:

Building Type I: First Floor, Second Floor and Third Floor

Building Type II: First Floor, Second Floor and Third Floor

Building Type III: First Floor, Second Floor and Third Floor

Photos are representational only. Because we are continually improving our homes, we reserve the right to make changes and modifications to methods and materials of construction and to the floorplans, features, square footage and room dimensions without notice. Floorplans, features, square footage and room dimensions are intended to be as accurate as possible. However, due to actual construction, floorplans, features, square footage and room dimensions may differ. These floorplans and renderings are a fair representation of the models to assist the customer in visualizing the homes and may not be accurately depicted. Upgrades and options are available at an additional cost and are subject to construction cut-off dates. Check with your sales agent.

Kakahiaka

PLAN G1

3 BEDROOM / 2 BATH

Total Living Area 1,433 s.f.

Lanai 163 s.f.

Total Area 1,596 s.f.

Auwina

PLAN G2

3 BEDROOM / 2 BATH

Total Living Area 1,433 s.f.

Lanai 100 s.f.

Total Area 1,533 s.f.

Papalani

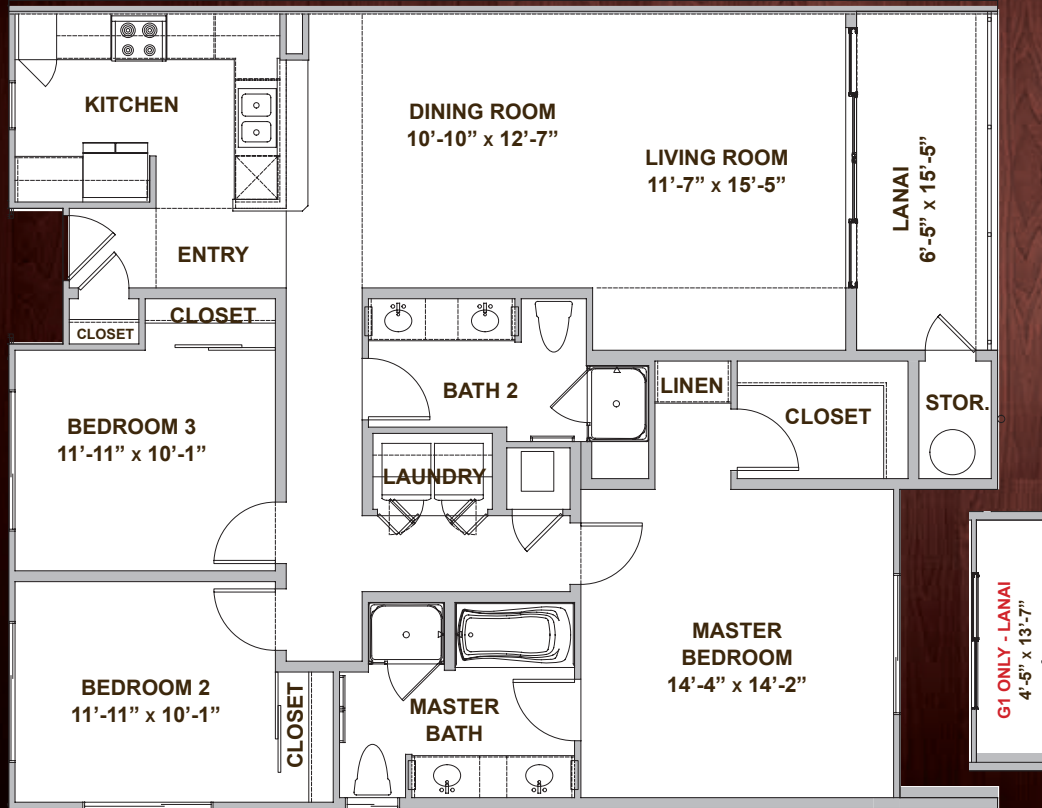
PLAN G3

2 BEDROOM / 2 BATH

Total Living Area 1,349 s.f.

Lanai 77 s.f.

Total Area 1,426 s.f.

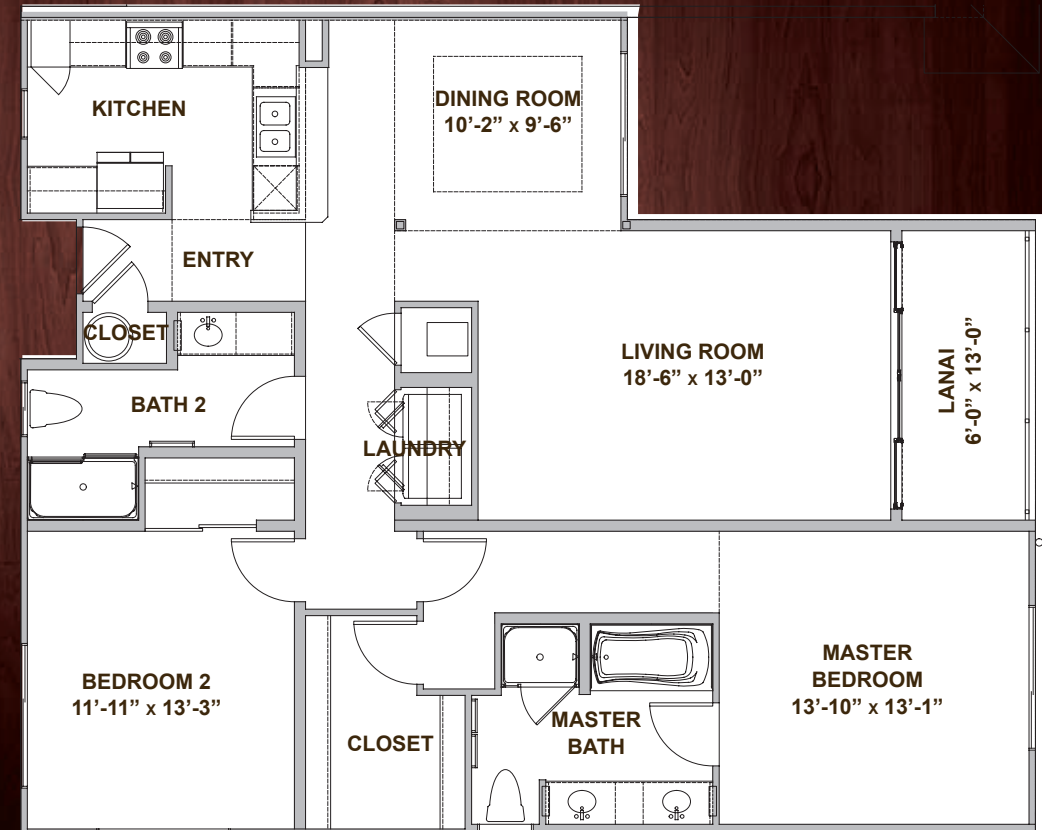


PLAN G1 LOCATED IN:

Building Type I: First Floor
Building Type II: First Floor

PLAN G2 LOCATED IN:

Building Type I: First Floor, Second Floor and Third Floor
Building Type II: First Floor, Second Floor and Third Floor



PLAN G3 LOCATED IN:

Building Type III: First Floor, Second Floor and Third Floor

Photos are representational only. Because we are continually improving our homes, we reserve the right to make changes and modifications to methods and materials of construction and to the floorplans, features, square footage and room dimensions without notice. Floorplans, features, square footage and room dimensions are intended to be as accurate as possible. However, due to actual construction, floorplans, features, square footage and room dimensions may differ. These floorplans and renderings are a fair representation of the models to assist the customer in visualizing the homes and may not be accurately depicted. Upgrades and options are available at an additional cost and are subject to construction cut-off dates. Check with your sales agent.

KA MALANAI

I N K A I L U A



KA MALANAI IN KAILUA

TEMPORARY SALES OFFICE

407 Uluniu Street, #105, Kailua, HI 96734

Phone: 808-230-2317

Sales Center Open Daily 10am-5pm

www.DRHortonHawaii.com

Offered by D.R. Horton - Schuler Homes, LLC

